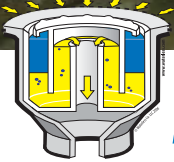


# WATERLESS™

*Unlike Any Other!*

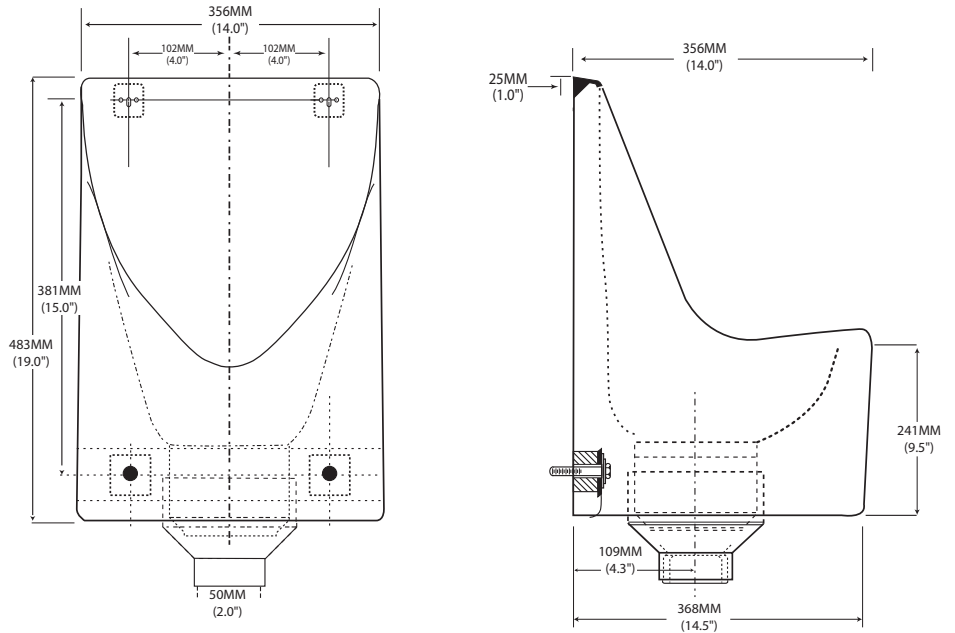
## Santa Fe™

Model # 2903



**EcoTrap® Inside!**

### DIMENSIONAL DRAWING



#### General

Urinal to be Waterless Co. No-Flush™ urinal Santa Fe™, Model #2903, for home or space saving environment use with 2" ABS interior drain and removable trap insert. Wall hung urinal with replaceable vertical EcoTrap® plastic trap insert having a circular outer rim opening for flow. Trap to be inserted by press fit. Trap insert removable only by special two pronged tool. Complies with ANSI Z124.9. Supplied vertical EcoTrap® insert required. Mount at 24" above finished floor to lip of urinal or as required by architect. Supply suitable wall support, i.e. carrier. Install and maintain as per manufacturer's instructions. Urinal 2" drain outlet installs and drains to 1.5" or 2" waste. Retrofit or new construction. Color: Sanitary white. To be made of High Performance Composite material. Approx. Weight: 12 lbs. Use standard sanitation practices to maintain fixture.

#### Furnished complete with:

Two unit integrated wall hangers, fastening hardware, and two EcoTraps®, vertical trap design. Adequate BlueSeal® trap liquid to be provided for EcoTrap® of urinal, not furnished. **Minimum 3 Year Limited Warranty Required.**

#### Note:

Installation requires purchase of standard ABS 2" drain parts and mounting bolts plus washers for attachment, not included. Supply suitable support for bottom of urinal and drain line.

*In keeping with our policy of product improvement, Waterless Co. reserves the right to change product specifications at any time without notice. Specification user is responsible for requesting updated information.*

#### Approval:

Architect/Engineer: \_\_\_\_\_

Job: \_\_\_\_\_

Customer: \_\_\_\_\_

Location: \_\_\_\_\_

Contractor: \_\_\_\_\_

Distributor: \_\_\_\_\_

Date: \_\_\_\_\_

Models Specified: \_\_\_\_\_ Qty: \_\_\_\_\_

Color: Sanitary White \_\_\_\_\_ Other \_\_\_\_\_

EcoTrap®: \_\_\_\_\_ BlueSeal®: \_\_\_\_\_